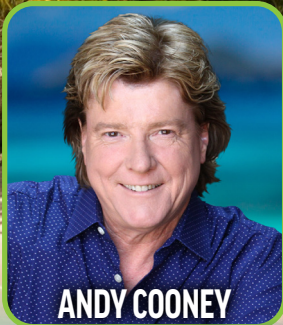


Andy Cooney's Cruise of Irish Stars

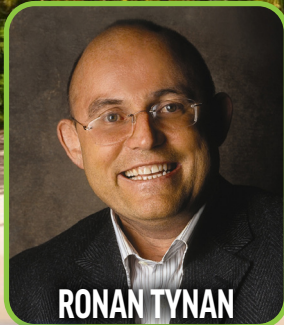
FEBRUARY 9 - FEBRUARY 16, 2025

Roundtrip from Fort Lauderdale, Florida to the Western Caribbean
Your Ports of Call include: Princess Cays, Bahamas; Ocho Rios, Jamaica; Grand Cayman, Cayman Islands; Cozumel, Mexico

STARRING



ANDY COONEY



RONAN TYNAN



**Aboard the
SKY PRINCESS**

WITH



THE NEW YORK TENORS



THE DRUIDS



THE SCREAMING ORPHANS



TOM COMERFORD



THE BYRNE BROTHERS



19TH STREET BAND



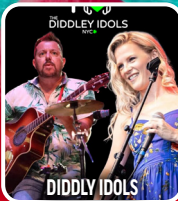
DEE REILLY



CATSKILLS CEILI BAND



TOMMY MULVIHILL



DIDDY IDOLS



BILL LEWIS



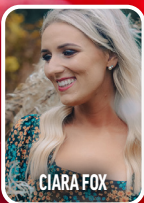
WILLIE LYNCH



CELTIC ROVERS



DECLAN AUNGIER



CIARA FOX



EMERALD FIRE DANCERS

Daily Mass
with
Fr. Francis Pizzarelli



Irish Group Dancing
Ceile & Set Dancing

~Book Now!~
and receive
\$700
in Amenities

Prices start at
\$1139⁰⁰

plus \$401.39 port taxes and fees

NEW PRINCESS PLUS AMENITY PROGRAM:

PRINCESS PLUS BEVERAGE PACKAGE

(Beer, Wine & Liquor by the Glass;

Specialty Coffees; Smoothies & Bottled Water)

PRE-PAID CREW APPRECIATION GRATUITIES

UNLIMITED WIFI

(one device per person)

AND MORE!

(applies to first & second passengers only)

Deposit of \$350 per person due at time of reservation.

DEPOSIT FULLY REFUNDABLE UNTIL

OCTOBER 23, 2024

Call Travel Professionals:

845-651-4441

Email: travelpro@jimmysturr.com

Roundtrip Bus Service from The Villages, FL

Call Carolyn Brennan 904-534-2031

www.cruiseofirishstars.com

All performances are exclusive to those booked through Travel Professionals ONLY!

***Entertainment and Itinerary are subject to change**

Andy Cooney's 26th ANNUAL CRUISE OF IRISH STARS 2025

7 – Day Western Caribbean Cruise Round-trip from Ft. Lauderdale, FL

Aboard the SKY PRINCESS

February 9 – February 16, 2025

CRUISE ITINERARY				
DAY	DATE	PORT	ARRIVE	DEPART
1	Sun. Feb 9	Ft. Lauderdale, Florida		3:00pm
2	Mon. Feb 10	Princess Cays, Bahamas	9:00 am	4:00 pm
3	Tue. Feb 11	At Sea		
4	Wed. Feb 12	Ocho Rios, Jamaica	8:00 am	4:00 pm
5	Thu. Feb 13	Grand Cayman, Cayman Islands	7:00 am	4:00 pm
6	Fri. Feb 14	Cozumel, Mexico	10:00 am	7:00 pm
7	Sat. Feb 15	At Sea		
8	Sun. Feb 16	Ft. Lauderdale, Florida	06:00 am	



CATEGORIES AND PRICING

•• Prices vary due to the cabin location on the Sky Princess and do not include taxes and fees ••

INSIDE STATEROOMS – Our Most Affordable Option

These staterooms are the perfect place to recharge your batteries. Our most affordable option, featuring two twin beds or a queen-size bed. Other amenities include a refrigerator, hair dryer, TV, closet and bathroom with shower

ID - \$1,139 per person IC - \$1,199 per person IB - \$1,259 per person

BALCONY – Front Row Seat for Beautiful Scenery

This impressive stateroom offers the added indulgence of a balcony and gives you more space than a standard stateroom. Enjoy your own private outdoor space with a table, two chairs, and a relaxing view of the inspiring scenery surrounding you, whether a beautiful sunset over the ocean or a new city to explore. It's also perfect to enjoy cocktails before dinner or a leisurely breakfast.

BW* - \$1,499 per person BD - \$1,639 per person BC - \$1,699 per person BB - \$1,739 per person

*BW is a partially obstructed view stateroom

DELUXE BALCONY – Spectacular Views From Your Room

Choose this enhanced version of a balcony stateroom with more space and a comfortable sofa bed. Enjoy a larger balcony with more room to view the beautiful scenery as you sail from destination to destination and take in the ocean breeze for a wonderful and romantic evening or morning. This stateroom also includes some of the amenities offered in a mini-suite stateroom. This is larger than the standard balcony stateroom – 233 SQ FT INCLUDING THE BALCONY PLUS A SOFA BED.

DW* - \$1,559 per person DE - \$1,779 per person DC - \$1,819 per person DB - \$1,869 per person

*DW is a partially obstructed view stateroom

MINI-SUITES – Add an Element of Luxury to Your Stay

Choose a luxurious Mini-Suite with balcony which is substantially larger than a balcony stateroom and receive a complimentary welcome glass of champagne. Mini-Suites include a separate sitting area with sofa bed, premium bathroom amenities with a tub and shower and two-flat-panel televisions. Mini-Suites offer an appealing and affordable option for families and groups looking for a little extra space.

MC - \$1,929 per person MB - \$1,989 per person

All rates are based on double occupancy, single supplement additional. Price difference in the categories is based on cabin location. Taxes and fees are \$401.39 per person and are not included in the above per person rates. Call for quotes on third and fourth passenger in a cabin. Prices, itinerary & performers are subject to change without notice.



ALL TRAVEL ARRANGEMENTS MUST BE BOOKED THROUGH TRAVEL PROFESSIONALS

62 North Main St., Suite 114, Florida, NY 10921

845-651-4441 • E-Mail: travelpro@jimmysturr.com

Deposit of \$350 per person due at time of reservation. • Credit Card Payments / Checks Payable to Travel Professionals

DEPOSIT FULLY REFUNDABLE UNTIL OCTOBER 23, 2024